

Community involvement in rural electrification

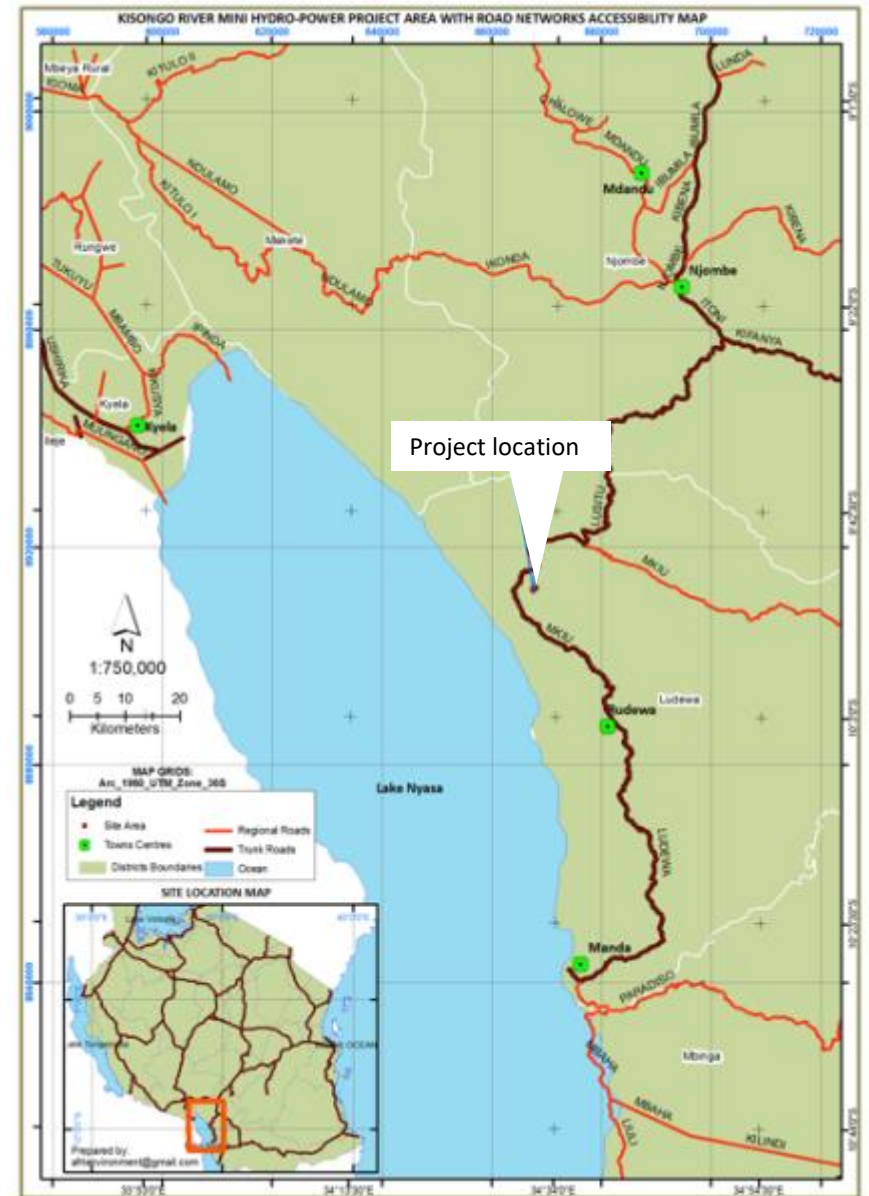


Project partners:

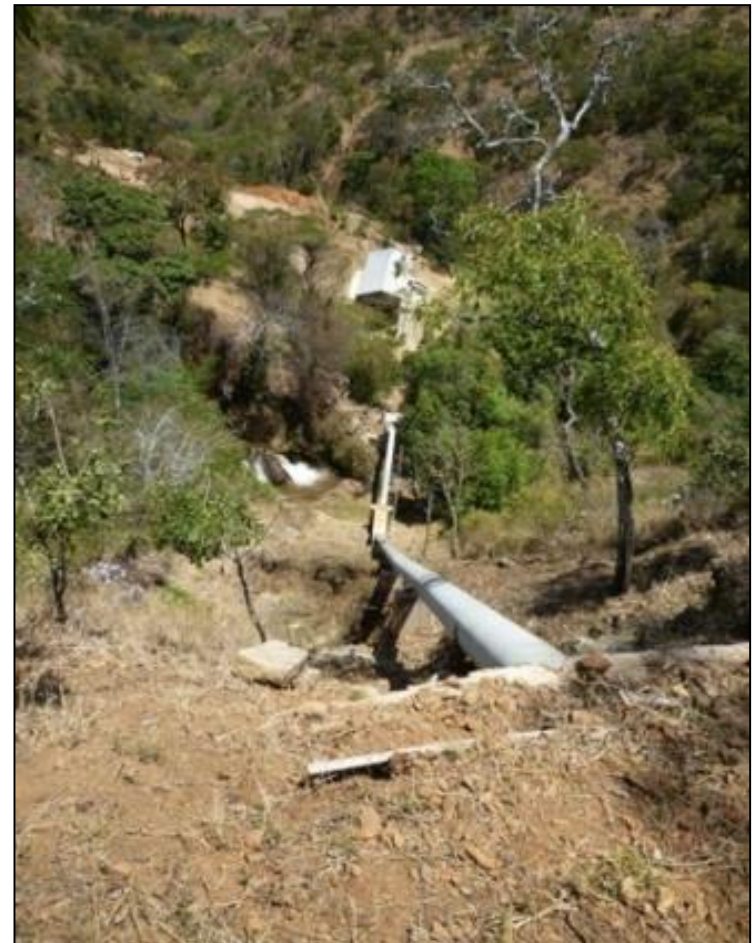


With financial support of:









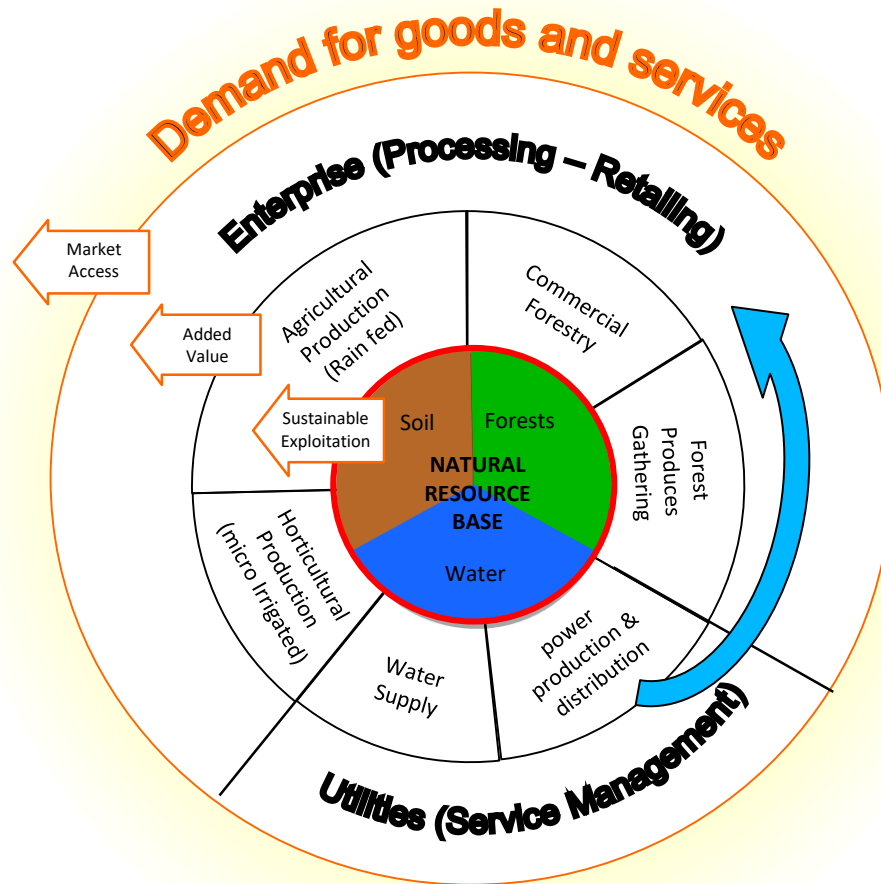


MULTI-STAKEHOLDER PARTICIPATION

(Communities, CBOs, Governmental Institutions, Private Sector, Academy)

IMPROVED FINANCIAL CAPITAL
(Access to Credit)

INCREASED HUMAN CAPITAL
(Formal Education and Training)



— Catchment area

LUMAMA:
a community based social enterprise
managing a 300 kw hydro-power plant

- Set up as an NGO
- Customers are members (approx. 1600)
- Organisation: transformers' committees, village committees, general assembly, Board, management
- Other stakeholders involved (District, Village authorities)

Community involvement models

- Community based social enterprise : Mawengi –LUMAMA; connected customers are members (users' association)
- Local stakeholders social enterprise: Lugarawa-NewCo (under construction)
Users' association as shareholder together with other non profit local stakeholders (Hospital, Education institutions)
- Private company with users as minority shareholders
- Investors owns the production facility while community owns or only manage the distribution network
- In general, sense of ownership can be triggered by appropriately designed instruments meant to benefit rural people: grid extension to remote communities, access to credit for electric appliances, local businesses promotion through productive use of energy, improved access to social services, lowering costs of services, etc.







